

Clear Spring Workers' Comp

Exclusively available at BTIS



Now Available in
The BTIS Workers' Comp Marketplace

PROGRAM HIGHLIGHTS

- Rated A- (Excellent) by A.M. Best
- 400 Eligible Class Codes
- New classes available:
 - Truckers
 - Cannabis
 - Owner-only (*Ghost policy*)
- Simplified proposal showing net rates per class and detailed payment plans
- Simplified binding process with one payment and online bind confirmation
- Contactless electronic signatures and monthly payroll reporting coming soon
- Available in California and [AZ, CO, NV, OR, TX](#) with more states coming soon



Get a Quote!



About Clear Spring

Clear Spring Property and Casualty Company is a subsidiary of Delaware Life Insurance Company and its parent company, Group1001. Our relationship with these organizations has yielded an innovative technology platform that provides smarter risk management solutions for property and casualty insurance brokers.

Clear Spring's risk management solutions evolve with market needs, while traditional insurance companies struggle to keep up. Our data-driven approach and mastery of emerging technologies provide a deeper connection with customers by developing smarter, more adaptive products that address the needs of brokers and their policyholders.

- A.M. Best Rated A-
- Parent – Delaware Life Insurance Company (*\$1.6 B of Policyholder Surplus*)
- Group1001 is committed to providing the P&C Division with enough capital to support its growth
- Focused on leveraging technology and analytics to better serve the small commercial insurance marketplace

btisinc.com | 877.649.6682



Clear Spring Workers' Comp



Features and Class List

NOW ELIGIBLE AS NEW VENTURES / NO PRIOR COVERAGE

- 5403/5432 Carpentry
- 5474/5482 Painting/Wallpaper
- 5446/5447 Wallboard
- 5027/5028 Masonry
- 7219 Trucking
- And many more!

EXPANDED EXPOSURES NOW ELIGIBLE

- Subcontractors up to 75% of total operations
- New venture risks with no prior work comp coverage
- Risks with current or past lapses in coverage

OWNER ONLY POLICIES

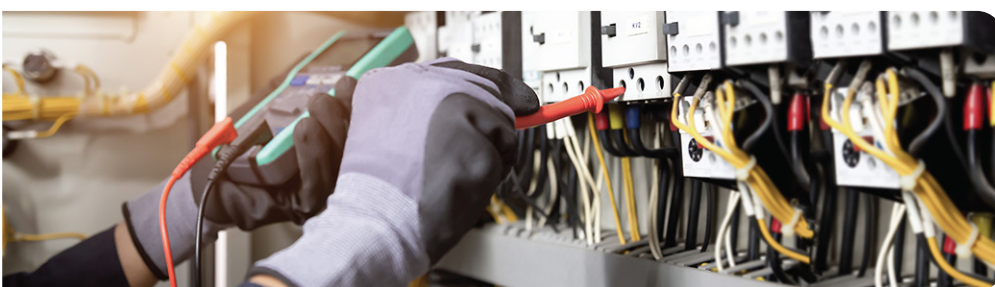
- No employees or payroll required
- Minimum Premium less than \$1,000
- Subcontracted costs up to \$50,000 annually is allowed
- Certificates of insurance collected & retained by insured for all subcontractors
- Monthly verification of no payroll & acceptable sub costs by the insured
- General Liability coverage must be placed with BTIS within the work comp policy term

MULTIPLE BILLING PLANS

- Direct bill
- Various monthly payment options
- Monthly payroll reporting coming soon

CLASS | DESCRIPTION

- 38 Stock Farms
- 38 Livestock Feed Yards
- 42 Landscape Gardening
- 96 Nut Hulling/Shelling/Processing
- 400 Warehouses—cotton—incl cotton compressing
- 1330 Blasting
- 1463 Asphalt Works
- 1463 Briquette Mfg
- 1463 Coke Mfg
- 1699 Rock/Mineral/Glass Wool Mfg
- 1701 Cement Mfg
- 1710 Stone Crushing
- 1741 Silica Grinding
- 1741 Plaster Mills
- 1803 Stone Cutting/Fabrication
- 1925 Die Casting Mfg
- 2002 Macaroni Mfg
- 2003 Bakeries or Cracker Mfg
- 2014 Grain/Rice Milling
- 2014 Feed Mfg
- 2030 Sugar Mfg/Refining
- 2063 Dairy Products/Ice Mfg
- 2081 Butchering
- 2081 Stockyards
- 2095 Meat Products Mfg
- 2102 Fruit/Vegetable Dehydrating
- 2107 Fruit—fresh fruit packing/handling
- 2108 Fruit—citrus fruit packing/handling
- 2109 Fruit—dried fruit packing/handling
- 2111 Fruit/Vegetable Preserving
- 2111 Olive Handling
- 2111 Fruit/Vegetable Pickling
- 2113 Fish/Seafood Products Mfg
- 2116 Fruit/Vegetable Juice/Concentrate Mfg
- 2117 Fruit/Vegetable Processing—frozen
- 2121 Breweries
- 2123 Fruit/Vegetable Processing—fresh



btisinc.com | 877.649.6682



Clear Spring Workers' Comp



Class List

CLASS | DESCRIPTION

2142 Wineries
2142 Distilling
2142 Vinegar Mfg
2163 Bottling
2222 Spinning/Weaving/Fiber Processing
2362 Knitting
2402 Carpet/Rug Mfg
2413 Textiles
2501 Clothing Mfg
2501 Hat Mfg
2501 Tailoring
2501 Lampshade Mfg
2501 Flower/Flower Arrangement Mfg-artificial
2570 Mattress/Box Springs Mfg
2571 Pillow/Quilt/Comforter/Cushion Mfg
2576 Awning/Tarp/Canvas Goods Mfg
2589 Dry Cleaning/Laundry-retail
2589 Dry Cleaning-N.O.C.
2660 Boot/Shoe Mfg/Repairing
2683 Luggage Mfg-hard case/framed
2688 Leather Goods Mfg
2710 Sawmills/Shingle Mills
2710 Log Chipping
2710 Wood Treating/Preserving
2731 Planing/Moulding Mills
2757 Pallet Mfg/Repair/Reconditioning
2757 Pallet Dealers
2759 Wooden Box/Container Mfg
2790 Pattern/Model Mfg
2797 Mobile/Modular/Manufact Home/Bldg Mfg
2797 Auto Body Mfg
2797 Recreational Vehicle Mfg
2806 Door/Sash/Window Mfg-wood
2806 Shutter Mfg
2812 Cabinet Mfg-wood
2819 Truss/Building Components Mfg
2840 Picture Frame Assembly

CLASS | DESCRIPTION

2840 Picture/Artwork Framing
2842 Wood Products Mfg
2852 Window Blind Mfg/Assembly
2881 Furniture Assembling
2881 Coffin/Casket Mfg/Assembling
2883 Furniture Mfg-wood
2915 Veneer/Veneer Products Mfg
2923 Musical Instrument Mfg-other than metal
3018 Steel Making/Processing
3022 Pipe/Tube/Extrusion Mfg
3030 Iron/Steel Works-structural
3039 Reinforcing Steel Fabrication
3040 Iron/Steel Works-non-structural
3060 Door/Window Mfg-metal/plastic
3060 Door/Window Frame Mfg-metal/plastic
3060 Door/Window Screen Mfg
3066 Sheet Metal Products Mfg
3066 Aluminum Ware Mfg
3066 Coppersmithing
3070 Computer Memory Disk Mfg
3076 Furniture Mfg-metal
3076 Wheelchair Mfg
3081 Foundries-iron
3085 Foundries-nonferrous
3099 Tool Mfg-N.O.C.
3110 Forging Works
3110 Blacksmithing
3131 Clothing Button/Fastener/Zipper Mfg
3131 Engraving/Laser Cutting/Laser Welding
3131 Wine Cork/Cap/Capsule/Retainer Mfg
3146 Hardware Mfg
3146 Heat Treating
3152 Nail/Tack/Rivet Mfg
3152 Nut/Bolt/Screw Mfg
3152 Screw Machine Products Mfg
3165 Air Conditioning/Refrigeration Equip Mfg

CLASS | DESCRIPTION

3165 Refrigerator Mfg
3165 Solar Panel Mfg
3169 Stove/Oven Mfg
3169 Water Heater Mfg
3178 Electronic Element Mfg
3179 Electrical Apparatus Mfg
3180 Light Fixture/Lamp Mfg/Assembly
3220 Can Mfg
3241 Wire/Wire Rope/Cable Mfg-incl wire dwg
3257 Wire Goods Mfg
3365 Welding/Cutting
3383 Jewelry Mfg
3383 Clock Mfg
3383 Watch Mfg
3383 Trophy Mfg
3400 Metal Goods Mfg
3401 Tube/Pipe Products Mfg
3401 Gate/Corral Mfg
3501 Machinery Mfg-portable tools
3501 Machinery Mfg-swimming pool/spa
3507 Machinery Mfg-agricultural/construction
3560 Machinery Mfg-commercial-food processing
3560 Machinery Mfg-industrial
3560 Machinery Mfg-material handling equip
3568 Electrical Connector Mfg
3569 Electric Motor Mfg/Repair
3570 Electric Appliance Mfg
3572 Medical Instrument Mfg
3573 Power Supply Mfg
3574 Machine Mfg
3574 Golf Club/Fishing Rod Mfg/Repair
3577 Printed Circuit Board Assembling
3612 Pump/Hydraulic Apparatus Mfg/Repair
3620 Boiler Mfg
3620 Plate Steel Products Mfg
3632 Machine Shops

Clear Spring Workers' Comp



Class List

CLASS | DESCRIPTION

3634 Valve Mfg
3643 Electric Power/Transmission Equip Mfg
3643 Electric Control Panel/Switchgear Mfg
3647 Battery Mfg
3647 Lead Mfg/Reclaiming/Alloying
3651 Electrical Wire Harness Mfg
3681 Instrument Mfg–electronic
3681 Computer/Computer Peripheral Equip Mfg
3681 Telecommunications Equip Mfg
3681 Audio/Video Electronic Products Mfg
3682 Instrument Mfg–non-electronic
3683 Speaker Mfg
3719 Oil/Gas Refineries–erection
3724 Millwright Work
3724 Electrical Machinery/Aux Apparatus
3726 Boiler Install/Service/Repair
3805 Aircraft Engine Mfg/Rebuilding
3805 Auto/Truck Engine Mfg
3808 Auto/Motorcycle Mfg/Assembling
3815 Truck/Truck Trailer/Bus Mfg/Assembling
3815 Truck Body Mfg–truck/trailer/bus
3821 Auto/Truck Dismantling
3828 Auto/Truck Parts Rebuilding
3830 Aircraft/Spacecraft Mfg
3830 Unmanned Aircraft System Mfg
3831 Machine Shops–aircraft components
3840 Auto/Truck/Motorcycle Parts Mfg
4000 Sand/Gravel Digging
4000 Clay Digging
4000 Salt Production
4000 Dredging
4034 Concrete Products Mfg
4036 Plaster Board Mfg
4038 Plaster/Concrete Statuary/Ornament Mfg
4038 Taxidermist
4041 Brick/Clay Building Products Mfg

CLASS | DESCRIPTION

4049 Pottery Products Mfg
4111 Glassware Mfg–no automatic machines
4111 Incandescent Lamp/Fluorescent Tube Mfg
4111 Cathedral/Art Glass Products Mfg
4114 Glassware Mfg
4130 Glass Merchants
4239 Paper/Cardboard Stock Mfg
4239 Fiber Products Mfg
4240 Box Mfg–paper/cardboard–rigid
4243 Box Mfg–paper/cardboard–folding
4244 Corrugated/Fiber Board Container Mfg
4250 Paper Coating/Laminating
4250 Computer/Typewriter Ribbon Mfg/Refurbish
4251 Envelope Mfg
4279 Paper Goods Mfg
4279 Bag Mfg–paper
4283 Building/Roofing Paper/Asphalt
4286 Bag Mfg–plastic
4295 Printing–screen–all other employees
4295 Screen Printed Merchandise Dealers–other
4297 Electronic Pre-press–all operations
4297 Graphic Design–all operations
4299 Printing–all other employees
4299 Bookbinding–all other employees
4304 Newspaper Publishing–all other employees
4351 Photo Engraving
4354 Printed Circuit Board Mfg
4361 Photographers
4361 Photofinishing
4362 Motion Pictures–processors/distributors
4410 Rubber Goods Mfg
4420 Rubber Tire Recapping/Retreading
4432 Pen/Mechanical Pencil Mfg
4470 Wire/Wire Rope/Cable Mfg–no wire drawing

CLASS | DESCRIPTION

4478 Plastic Goods Mfg
4492 Sign Mfg–metal/plastic/wood
4494 Plastics–blow molded products mfg
4495 Plastics–extrusion molded products mfg
4496 Plastics–fabricated products mfg
4497 Plastics–fiber reinforced products mfg
4498 Plastics–injection molded products mfg
4499 Plastics–thermoformed products mfg
4511 Analytical/Testing Laboratories
4512 Biomedical Research Laboratories
4557 Ink/Adhesive/Polish/Wax Products Mfg
4558 Paint/Varnish/Lacquer Mfg
4558 Resin Mfg
4611 Drug/Medicine/Pharm Preparations Mfg
4623 Cosmetic/Personal Care Products Mfg
4635 Oxygen/Hydrogen Mfg
4683 Vegetable Oil Mfg/Refining
4683 Cottonseed Oil Mfg/Refining
4691 Orthotic/Prosthetic Device Mfg
4692 Dental Laboratories
4717 Butter Substitutes Mfg
4720 Soap/Synthetic Detergent Mfg
4829 Chemical Mfg
4983 Gasket Mfg
5020 Ceiling Installation
5027 Masonry–low wage
5028 Masonry–high wage
5040 Iron/Steel Erection–structural
5040 Bridge Building–metal
5040 Painting–steel structures/bridges
5057 Iron/Steel Erection–N.O.C.
5102 Iron/Steel Erection–non-structural
5102 Floor Installation
5107 Door/Pre-Glazed Window Installation
5108 Door Installation–overhead doors
5128 Instrument Install/Repair

Clear Spring Workers' Comp



Class List

CLASS | DESCRIPTION

5140 Electrical Wiring–high wage
 5146 Cabinet/Fixture/Trim Installation
 5146 Sign Installation/Repair
 5183 Refrigeration Equip–low wage
 5183 Heating/Air Conditioning Equip–low wage
 5184 Steam Pipe/Boiler Insulation
 5185 Automatic Sprinkler Install–low wage
 5186 Automatic Sprinkler Install–high wage
 5187 Plumbing–high wage
 5187 Refrigeration Equipment–high wage
 5187 Heating/Air Conditioning Equip–high wage
 5190 Electrical Wiring–low wage
 5191 Office Machine/POS Equip Install/Repair
 5192 Vending/Coin-Operated Machines
 5195 Communications Cabling
 5201 Concrete/Cement Work–sidewalks–low wage
 5201 Concrete/Cement Work–low wage
 5205 Concrete/Cement Work–sidewalks–high wage
 5205 Concrete/Cement Work–high wage
 5212 Concrete Pumping
 5213 Concrete Construction
 5214 Concrete/Cement Work–precast
 5222 Concrete Construction–bridges
 5222 Chimney Construction
 5225 Reinforcing Steel Installation
 5348 Tile/Stone/Mosaic/Terrazzo Work
 5403 Carpentry–low wage
 5432 Carpentry–high wage
 5436 Hardwood Floor Laying
 5443 Lathing
 5446 Wallboard Installation–low wage
 5447 Wallboard Installation–high wage
 5467 Glaziers–low wage
 5470 Glaziers–high wage
 5474 Painting/Wallpaper Install–low wage

CLASS | DESCRIPTION

5474 Waterproofing–low wage
 5474 Painting–oil/gas storage tanks–low wage
 5479 Insulation Work
 5482 Painting/Wallpaper Install–high wage
 5482 Waterproofing–high wage
 5482 Painting–oil/gas–storage tanks–high wage
 5484 Plastering/Stucco Work–low wage
 5485 Plastering/Stucco Work–high wage
 5506 Street/Road Construction–paving
 5507 Street/Road Construction–grading
 5538 Sheet Metal Work–low wage
 5538 Heating/Air Conditioning Duct–low wage
 5542 Sheet Metal Work–high wage
 5542 Heating/Air Conditioning Duct–high wage
 5606 Contractors–executive level supervisors
 5632 Steel Framing–light gauge–low wage
 5633 Steel Framing–light gauge–high wage
 5650 Termite Control Work
 6003 Pile Driving
 6003 Wharf Building
 6003 Bridge/Trestle Construction–wood
 6218 Excavation–low wage
 6218 Grading Land–low wage
 6218 Land Leveling–farm lands–low wage
 6220 Excavation–high wage
 6220 Grading Land–high wage
 6220 Land Leveling–farm lands–high wage
 6233 Oil/Gas Pipeline Construction
 6307 Sewer Construction–low wage
 6308 Sewer Construction–high wage
 6315 Water Mains Construction–low wage
 6315 Gas Mains Construction–low wage
 6316 Water Mains Construction–high wage
 6316 Gas Mains Construction–high wage
 6325 Conduit Construction/Underground Wiring

CLASS | DESCRIPTION

6364 Irrigation Pipe Installation
 6400 Fence Construction
 6504 Food Products Mfg/Processing
 7198 Parcel Delivery/Messenger Service
 7198 Armored Transport Services
 7207 Stables
 7207 Clubs–riding
 7207 Horse Shows/Rodeos–stable employees
 7207 Pack Trains
 7207 Racing Stables–harness racing
 7219 Trucking Firms
 7219 Express Companies
 7219 Mobile Crane/Hoisting Service
 7227 Auto Tow/Roadside Assistance
 7232 Mail Delivery Service Companies
 7248 Marine Appraisers/Surveyors
 7272 Water Truck Service Companies
 7332 Ambulance Services
 7365 Taxicab Operations
 7382 Bus/Shuttle Van/Limousine Operations
 7392 Beer Dealers
 7520 Water Companies
 7580 Sanitary/Sanitation Districts Operation
 7600 Communication Service Providers
 7601 Aerial Line Construction
 7605 Security/Fire Alarm Install/Repair
 7607 Video Post-Production
 7607 Audio Post-Production
 7610 Radio/Television/Commercial Stations
 7720 Police/Sheriffs–not volunteers
 8001 Stores–florists
 8004 Stores–garden supplies
 8006 Stores–groceries–retail
 8006 Stores–fruit/vegetables–retail
 8008 Stores–clothing/linens/fabric–retail
 8013 Stores–jewelry
 8013 Stores–eyewear

btisinc.com | 877.649.6682



Clear Spring Workers' Comp



Class List

CLASS | DESCRIPTION

8015 Stores–furniture
8017 Stores–retail
8017 Linen/Restroom Supply Services
8017 Product Demonstrators in Stores
8018 Stores–wholesale
8019 Printing–quick printing
8019 Document Duplication/Photocopying
8021 Stores–meat/fish/poultry–wholesale
8028 Equipment/Machinery Rental Yards
8031 Stores–meat/fish/poultry–retail
8032 Stores–clothing/linens/
fabric–wholesale
8039 Stores–department stores
8041 Stores–wine/spirits–wholesale
8042 Stores–floor covering
8046 Stores–auto/truck parts/accessories
8057 Boat Dealers
8059 Stores–tile
8060 Stores–wine/beer/spirits–retail
8061 Stores–convenience–retail
8062 Stores–computer
8063 Stores–lighting fixtures
8064 Stores–office supplies
8065 Stores–paint/paint supplies
8066 Stores–bicycles/bicycle accessories
8071 Stores–books/video/audio–retail
8078 Sandwich Shops
8078 Beverage Preparation Shops
8078 Ice Cream/Frozen Yogurt Shops
8102 Seed Merchants
8106 Metal Stock Dealers
8107 Machinery/Equipment Dealers
8110 Stores–welding supplies
8116 Farm Machinery Dealers/Repair
Facilities
8117 Stores–feed/tack/farm supplies
8209 Vegetable/Tomato Packing/Handling
8215 Hay/Grain/Feed Dealers
8215 Warehouses–grain/bean

CLASS | DESCRIPTION

8227 Construction/Erection Permanent
Yards
8232 Lumberyards
8232 Building Material Dealers
8232 Fuel and Material Dealers
8267 Machinery/Equipment
Dealers–secondhand
8278 Racing Stables–jockeys/harness
drivers
8286 Livestock Dealers/Auction Yards
8290 Warehouses–self-storage–other
employees
8291 Warehouses–cold storage
8291 Warehouses–climate controlled
storage
8292 Warehouses–general merchandise
8293 Warehouses–furniture
8293 Furniture Moving
8304 Grain Elevators/Storage Warehouses
8324 Gasoline Stations
8350 Gasoline/Oil Dealers
8387 Auto/Truck Gasoline Service Stations
8387 Auto/Truck Oil/Fluid Service Facilities
8387 Auto/Truck Washing Facilities
8388 Rubber Tire Dealers
8389 Auto/Truck Repair Facilities
8390 Auto/Truck/Van
Conversion/Customizing
8391 Auto/Truck Dealers
8392 Auto/Truck Storage Garages/Parking
Lots
8393 Auto/Truck Body Repairing/Painting
8397 Auto/Truck Transmission
Repair/Rebuild
8400 Motorcycle Dealers/Repair Facilities
8500 Metal Scrap Dealers
8601 Engineers–consulting
8601 Oil/Gas Geologists/Scouts
8601 Forest Engineers
8631 Racing Stables–all other employees
8720 Inspection for Insurance/Safety/Value
8720 Elevator Inspecting

CLASS | DESCRIPTION

8720 Weighers/Samplers/Inspectors
8720 Unmanned Aircraft System Operation
8729 Elevator Service Inspections/Oil/Adjust
8740 Apt/Condo–prop management
supervisors
8740 Commercial Prop–N.O.C.–prop mgmt
supv
8740 Building Op–prop management
supervisors
8740 Mobile Home Park–prop management
supv
8740 Warehouses–self-storage–prop
management supv
8740 Apt/Condo–Seniors–prop
management supv
8740 Comm/Resident Mixed-Use–prop
mgmt supv
8741 Real Estate Agencies
8742 Salespersons–Outside
8743 Mortgage Brokers
8745 News Agents/Distributors Magazines
8748 Auto/Truck Dealers–Salespersons
8749 Mortgage Bankers
8755 Labor Unions
8800 Mailing/Addressing Companies
8801 Credit Unions
8803 Auditing/Accounting/Management
Consulting
8804 Substance Use Disorder Recovery
Homes
8804 Social Rehab Facilities for Adults
8806 Sheltered Workshops
8807 Newspaper/Magazine/Book Publishing
8808 Banks
8810 Clerical Office Employees
8813 Printing–editing
8813 Bookbinding–editing
8818 Newspaper Publishing/Printing–editing
8820 Law Firms
8821 Law Firm Support Services
8822 Insurance Companies
8823 Residential Care Facilities for Children

btisinc.com | 877.649.6682



Clear Spring Workers' Comp



Class List

CLASS | DESCRIPTION

8827 Home Care Services
8827 Nursing Care
8829 Skilled Nursing Facilities
8829 Convalescent Nursing Facilities
8830 Institutional Employees
8831 Hospitals–veterinary
8831 Kennels
8834 Physicians' Practices/Outpatient Clinics
8838 Museums
8839 Dentists/Dental Surgeons
8840 Church/Temple/Mosque/Synagogue–clergy
8846 Printing–screen printing–editing
8846 Screen Printed Merchandise Dlr–editing
8847 Beverage Container Collection/Redemption
8851 Congregate Living Facilities–elderly
8852 Home Infusion Therapists
8859 Computer Programming/Software Developmnt
8859 Internet/Web-Based Application Developmt
8868 Colleges/Schools–private–professionals
8875 Public Colleges/Schools
8875 Superintendent of Public Schools Office
9007 Apt/Condo Operation–seniors–other
9008 Janitorial Services
9009 Commercial Prop–N.O.C.–other
9010 Mobile Home Park Operation–other
9011 Apt/Condo Operation–N.O.C.–other
9011 Comm/Resident Mixed-Use–other
9015 Building Operation–N.O.C.–other employees
9015 Church/Temple/Mosque/Synagogue–other
9015 Libraries–private–all other employees
9016 Amusement/Rec Facilities–no device
9016 Dog Shows

CLASS | DESCRIPTION

9016 Horse Shows/Rodeos–not stable employees
9016 Boat Marina/Rental Operation
9031 Pest Control
9033 Housing Authorities
9043 Hospitals
9048 Camps
9048 Boy/Girl Scout Councils–camp operations
9050 Hotels/Motels/Short-Term Housing
9053 Health Clubs/Gyms
9053 Swimming Pools/Clubs
9053 Clubs–racquet sports
9059 Day Care Centers
9060 Clubs–country/golf
9061 Clubs–N.O.C.
9066 Homeowners Associations/Housing Co-ops
9067 Clubs – community health/wellness
9067 Clubs–boys and girls
9069 Clubs–gaming
9070 Residential Care Facilities–elderly
9070 Residential Care Facilities–adults
9079 Restaurants/Taverns
9079 Concessionaires
9085 Residential Care–development disabled
9092 Bowling Centers
9092 Billiard Halls
9092 Skating Centers
9097 Swimming Pool Cleaning/Serviceing
9101 Colleges/Schools–private
9151 Theaters–musical entertainment
9154 Theaters–not motion picture
9155 Theaters–motion picture
9156 Theaters–dance/opera
9184 Ski Resorts
9220 Cemetery Operation
9220 Crematory Operation
9402 Sewer/Tank/Hazardous Spill Cleaning

CLASS | DESCRIPTION

9403 Garbage/Refuse Collecting
9403 Street Sweeping Service Companies
9403 Document Destruction
9426 Septic/Portable Toilet Services
9501 Painting–shop only
9501 Painting–auto/truck bodies
9507 Sign Painting/Lettering/Quick Sign Shops
9516 TV/Video/Audio Equip Install/Repair
9519 Household Appliances
9519 Water Soften/Condition/Filtration System
9521 House Furnishings
9521 Floor Covering
9521 Window Covering
9522 Upholstering–N.O.C.
9522 Upholstering–furniture
9522 Auto Upholstering
9522 Upholstering–coffin/casket
9522 Upholstering–wheelchair
9529 Scaffolds/Construction Elevators
9529 Decorating
9529 Tent Erection/Removal/Repair
9549 Advertising Companies
9552 Sign Erection/Repair
9586 Barber Shops/Hair Styling
9610 Motion Pictures–production
9620 Funeral Directors



Get a quote in
**The BTIS Workers' Comp
Marketplace**

btisinc.com | 877.649.6682

